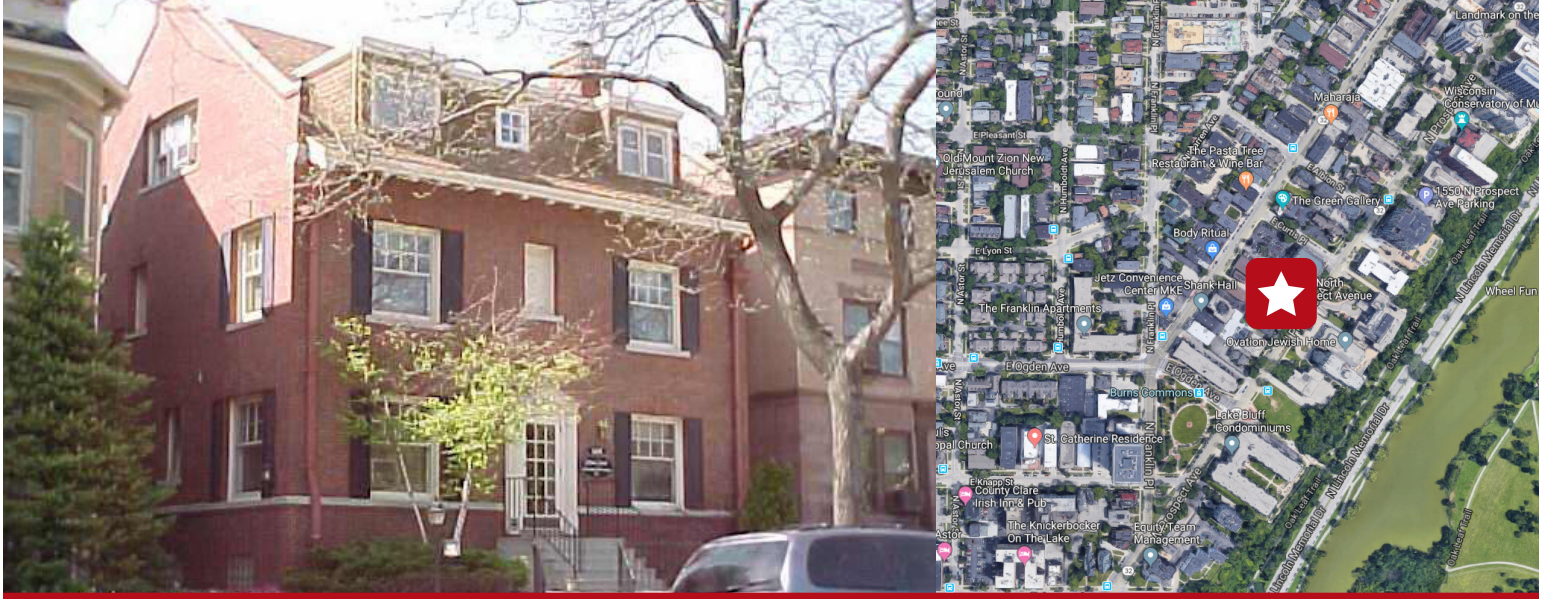


1429 N. Prospect Avenue Milwaukee, WI 53202



FOR SALE
5,950 SF OFFICE BUILDING
\$850,000

Property Highlights

- 10 car parking in rear
- Close to Milwaukee Central Business District
- Walking distance to "The Hop"
- Office space on First and second Floors
- 2 one bedroom apartments on third Floor
- New roof - 2016
- 2 new HVAC units - 2017
- Usable basement for storage
- 2020 R.E. Taxes \$20,063.42

CONTACT:

Pete Slezak
Senior Vice President
414-272-6721
pslezak@barrycre.com

Nick Zurich
Broker
414-272-6723
nzurich@barrycre.com



Commercial Real Estate Services
Since 1921

1232 NORTH EDISON STREET | MILWAUKEE, WI 53202 | 414-271-1870 MAIN | 414-271-1478 FAX | WWW.BARRYCRE.COM

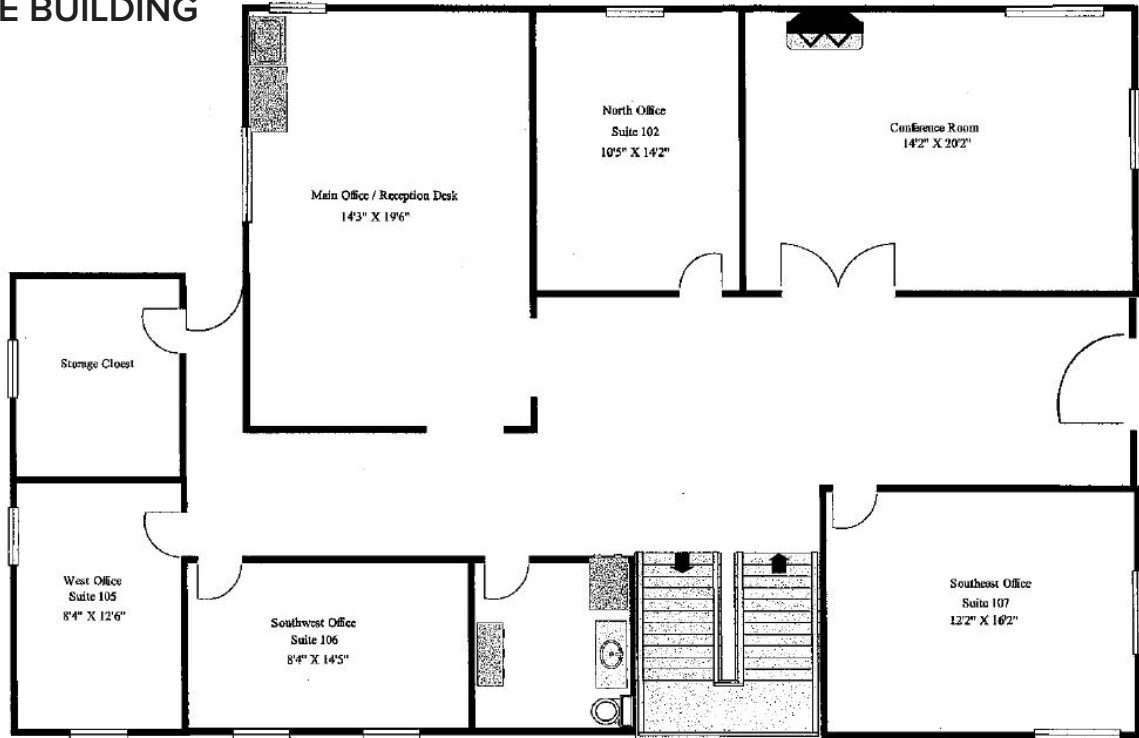
The information contained herein was lawfully obtained from sources we consider reliable but may contain errors, omissions, approximations or outdated information. Barry Commercial Real Estate Services, Inc. (The Barry Company), its employees and independent contractors make no representations or warranties whatsoever regarding: (1) the accuracy of the information contained herein and (2) the physical or environmental condition of this property or any part of this property. Prospective purchasers are strongly encouraged to conduct an independent investigation of the condition of this property.

1429 N. Prospect Avenue
Milwaukee, WI 53202

FOR SALE

5,950 SF OFFICE BUILDING
\$850,000

First Floor
2,288 SF



Property Specifications

Building Size:	5,950 SF
Office Size:	4,575 SF
Residential Size:	1,375 SF (688 SF & 687 SF)
Number of Floors:	3
Year Built:	1905
Construction Type:	Brick
AC:	1st and 2nd Floors
Floor Drains:	Three in the basement
Lavatories:	Four
Present Use:	Office and two rented apartments
Site Size:	.15289 AC
Parking Area:	Room for 10 cars
Zoning:	RO2
Public Transportation:	Bus Service on Prospect, The Hop one Block away
Utilities:	Municipal

CONTACT:

Pete Slezak
Senior Vice President
414-272-6721
pslezak@barrycre.com

Nick Zurich
Broker
414-272-6723
nzurich@barrycre.com



Commercial Real Estate Services
Since 1921

1232 NORTH EDISON STREET | MILWAUKEE, WI 53202 | 414-271-1870 MAIN | 414-271-1478 FAX | WWW.BARRYCRE.COM

The information contained herein was lawfully obtained from sources we consider reliable but may contain errors, omissions, approximations or outdated information. Barry Commercial Real Estate Services, Inc. (The Barry Company), its employees and independent contractors make no representations or warranties whatsoever regarding: (1) the accuracy of the information contained herein and (2) the physical or environmental condition of this property or any part of this property. Prospective purchasers are strongly encouraged to conduct an independent investigation of the condition of this property.

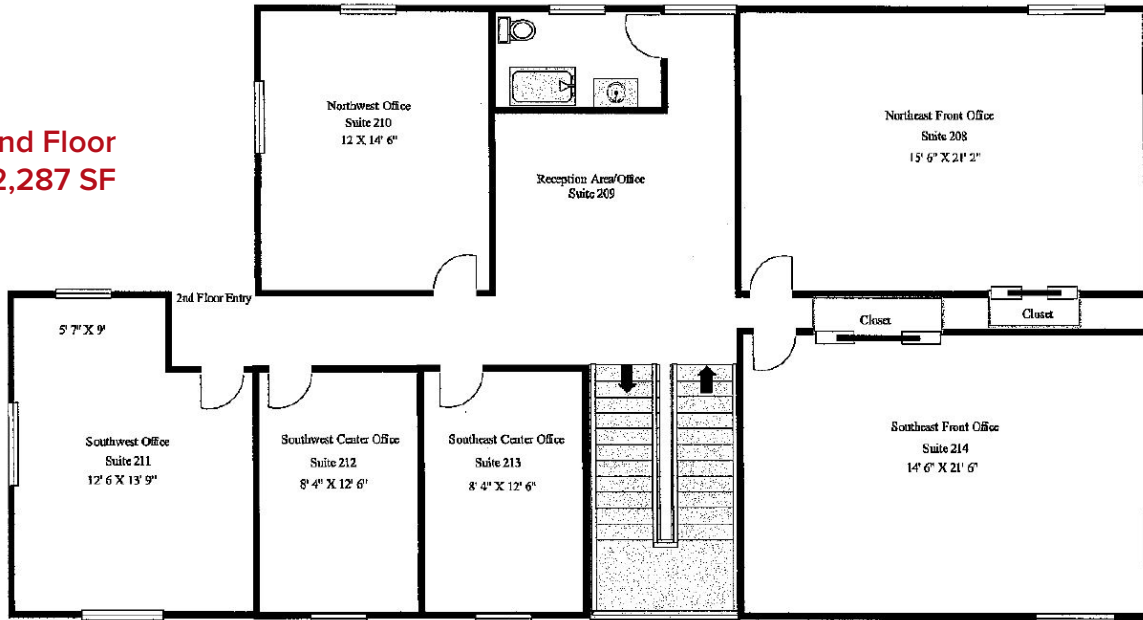
1429 N. Prospect Avenue
Milwaukee, WI 53202

FOR SALE

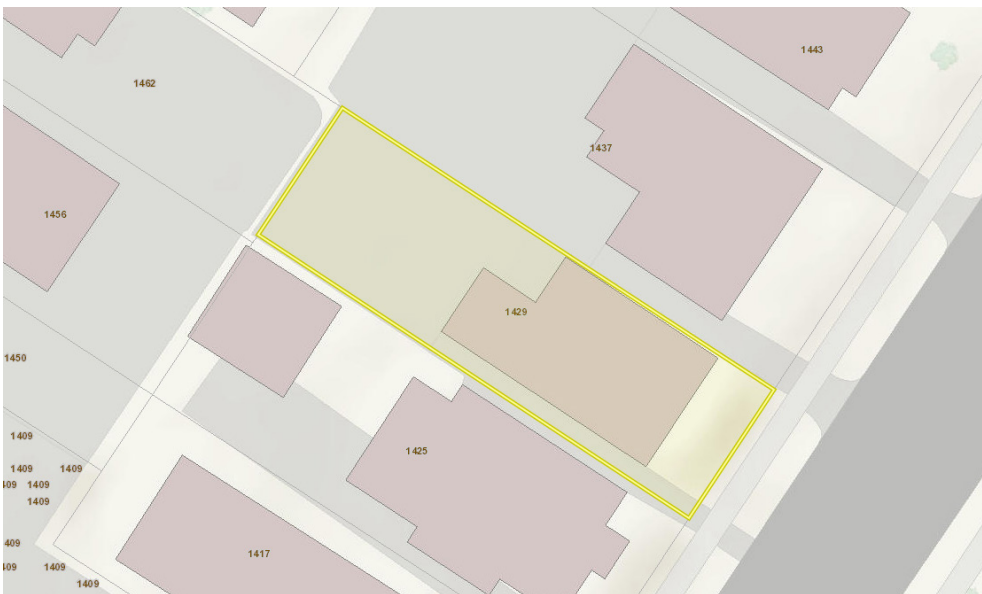
5,950 SF OFFICE BUILDING

\$850,000

Second Floor
2,287 SF



1429 N Prospect Avenue Milwaukee, Wisconsin 53202
Second Floor



CONTACT:

Pete Slezak
Senior Vice President
414-272-6721
pslezak@barrycr.com

Nick Zurich
Broker
414-272-6723
nzurich@barrycr.com



Commercial Real Estate Services
Since 1921

1232 NORTH EDISON STREET | MILWAUKEE, WI 53202 | 414-271-1870 MAIN | 414-271-1478 FAX | WWW.BARRYCRE.COM

The information contained herein was lawfully obtained from sources we consider reliable but may contain errors, omissions, approximations or outdated information. Barry Commercial Real Estate Services, Inc. (The Barry Company), its employees and independent contractors make no representations or warranties whatsoever regarding: (1) the accuracy of the information contained herein and (2) the physical or environmental condition of this property or any part of this property. Prospective purchasers are strongly encouraged to conduct an independent investigation of the condition of this property.