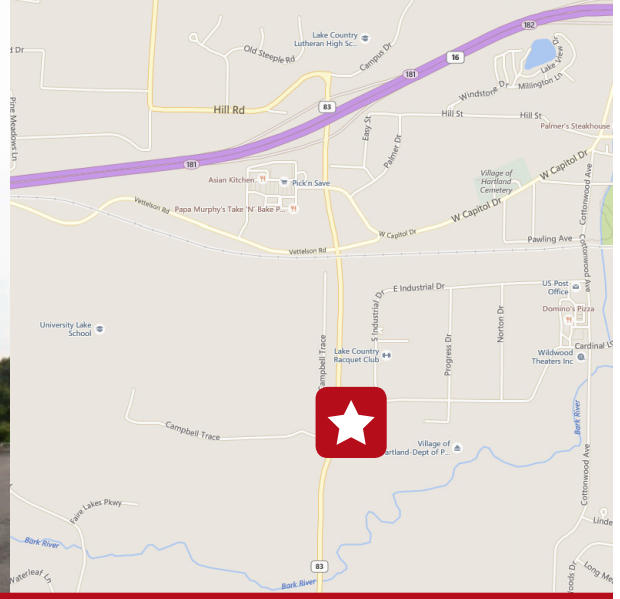


725 Industrial Court

Suburban Milwaukee
Hartland, WI 53029



FOR LEASE
8,600 SF COMMERCIAL BUILDING
Asking Lease Rate: \$7.00/SF NNN

UNDER NEW MOTIVATED OWNERSHIP!!

Property Highlights

- Divisible to 1,500/2,000 SF
- Open floorplan
- Suitable for offices or retail
- Hwy 83 exposure
- Motivated landlord

CONTACT:

James M. Young, MBA
Senior Vice President
414-272-6723
jyoung@barrycr.com



Commercial Real Estate Services
Since 1921

1232 NORTH EDISON STREET | MILWAUKEE, WI 53202 | 414-271-1870 MAIN | 414-271-1478 FAX | WWW.BARRYCRE.COM

The information contained herein was lawfully obtained from sources we consider reliable but may contain errors, omissions, approximations or outdated information. The Barry Company, Inc., its employees and independent contractors make no representations or warranties whatsoever regarding: (1) the accuracy of the information contained herein and (2) the physical or environmental condition of this property or any part of this property. Prospective purchasers are strongly encouraged to conduct an independent investigation of the condition of this property.

725 Industrial Court
Suburban Milwaukee
Hartland, WI 53029

FOR LEASE

8,600 SF COMMERCIAL BUILDING

Asking Lease Rate: \$7.00/SF NNN

Property Specifications

Building Size:	8,600 SF±
Office Size:	Build to Suit
Vacant Size:	8,600 SF±
Building Dimensions:	See layout
Number of Floors:	1
Minimum Divisible:	1,500 SF±
Maximum Contiguous:	8,600 SF±
Year Built:	2000±
Ceiling Height:	10 FT clear
Construction Type:	Masonry
Drive-in Doors:	N/A
Dock Doors:	N/A
Power:	Ample
A/C:	100%
Floor Drains:	N/A
Lighting:	Updated
Sprinkler Type:	N/A
Lavatories:	In suite
Bay Size:	See layout
Present Use:	Office/Retail
Parking Area:	42 spaces
Utilities:	Municipal

CONTACT:

James M. Young, MBA
Senior Vice President
414-272-6723
jyoung@barrycr.com

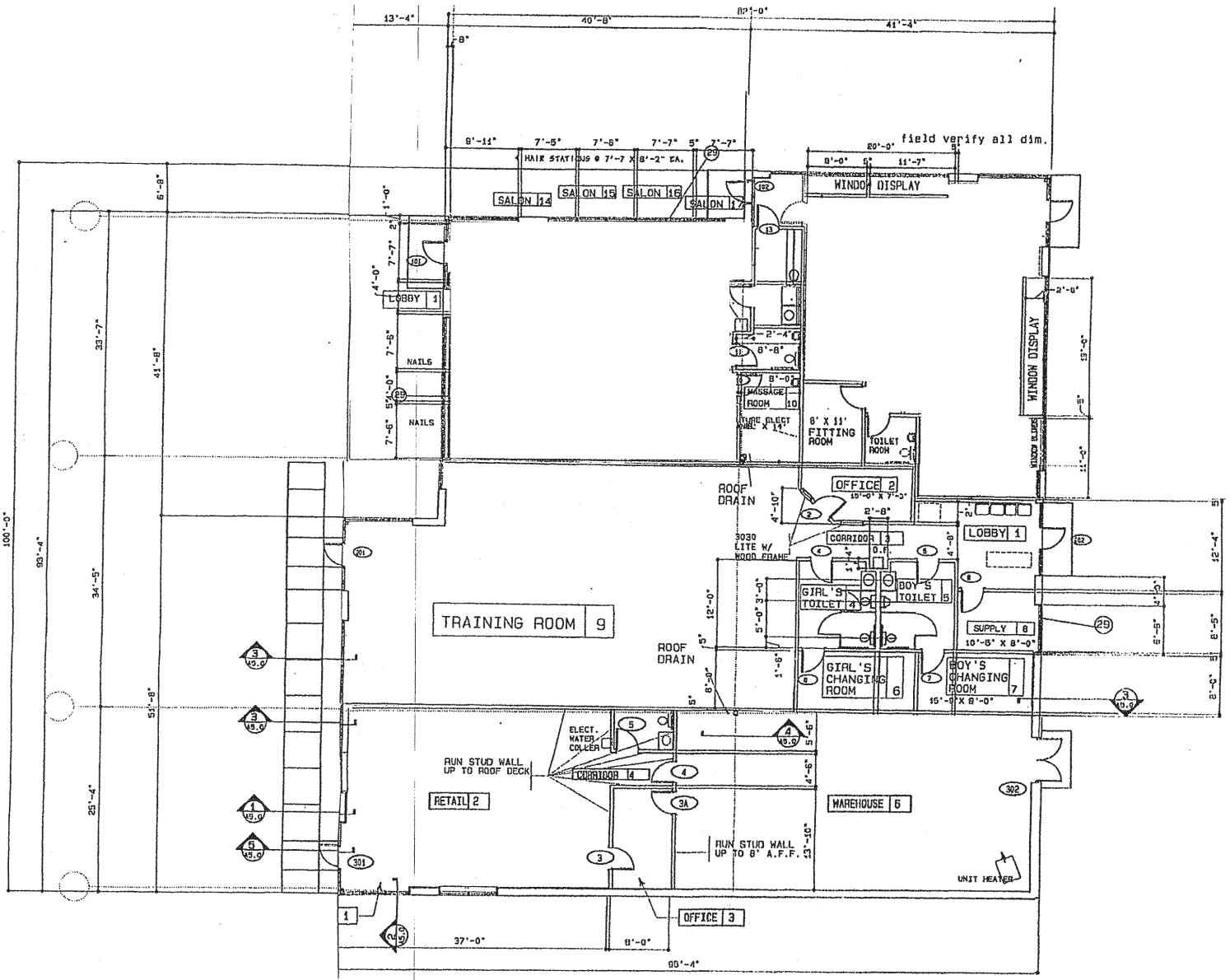


Commercial Real Estate Services
Since 1921

1232 NORTH EDISON STREET | MILWAUKEE, WI 53202 | 414-271-1870 MAIN | 414-271-1478 FAX | WWW.BARRYCRE.COM

The information contained herein was lawfully obtained from sources we consider reliable but may contain errors, omissions, approximations or outdated information. The Barry Company, Inc., its employees and independent contractors make no representations or warranties whatsoever regarding: (1) the accuracy of the information contained herein and (2) the physical or environmental condition of this property or any part of this property. Prospective purchasers are strongly encouraged to conduct an independent investigation of the condition of this property.

725 Industrial Court
 Suburban Milwaukee
 Hartland, WI 53029



CONTACT:

James M. Young, MBA
 Senior Vice President
 414-272-6723
 jyoung@barrycre.com



THE BARRY COMPANY
 Commercial Real Estate Services
 Since 1921

1232 NORTH EDISON STREET | MILWAUKEE, WI 53202 | 414-271-1870 MAIN | 414-271-1478 FAX | WWW.BARRYCRE.COM

The information contained herein was lawfully obtained from sources we consider reliable but may contain errors, omissions, approximations or outdated information. The Barry Company, Inc., its employees and independent contractors make no representations or warranties whatsoever regarding: (1) the accuracy of the information contained herein and (2) the physical or environmental condition of this property or any part of this property. Prospective purchasers are strongly encouraged to conduct an independent investigation of the condition of this property.